



CRAFTING IDEA

GB

Cream-soap with chocolate glaze on the inside of a gift box

TIME REQUIRED
15 MINUTES
(WITHOUT CASTING
& DRYING TIME)



LEVEL OF DIFFICULTY

Used items:

Soap

34 231 000	Soap casting mould: round	50 mm
34 228 000	Creative-soap	27 g
34 246 532	Soap-colour, nougat	

Chocolate glaze and cookie cutter

34 228 000	Creative-soap
34 246 532	Soap-colour, nougat
61 098 00	Wooden skewer, 3 mm ø

Cream rosette

34 223 000	Kneading-soap
89 799 000	Pastry bag with 4 tips

Wrapping

58 883 271	Scrapbooking paper Double Dot, shell-pink	1 sheet
23 050 000	Rigid film, crystal clear, 21 × 29.7 cm loose	5.5 × 5.5 cm
33 398 00	Special double-sided adh.tape, highly transp.	50 cm

Additionally you need:

57 985 000	Sure Cut paper cutting machine A4
57 987 000	Triple Track blades 2 x, straight cut

Ruler, scissors, pencil, scales, pot, melting pot, small plastic container, stirrers, kettle, cooking oil, craft stick

Instructions:

Soap

- 1 Melt the creative-soap in a water-bath on the stove (max. 60° - do not boil).
- 2 After the complete melting, you can stir the desired colour and/or fragrance oil in the liquid soap. Therefore, use a wooden spatula or a teaspoon. Pour it dropwise.
- 3 Let the soap dry well out (at least 2-3 hours, ideally one day).
- 4 Demould the soap by a slight pressure.
- 5 Impale the poured-out soap onto the wooden skewer and dip it into the chocolate glaze (see instructions for chocolate glaze) and let it dry well.
- 6 Glue the cutout flower on (see instructions for cookie cutter) with some white liquid soap onto the cast piece of soap.
- 7 Then put a cream rosette (see instructions for cream rosette) on which you put further a coffee bean shaped out of coloured kneading-soap.



Chocolate glaze

8 Melt the creative-soap in a water-bath on the stove (max. 60° - do not boil). After the complete melting, you can stir the nougat colour in the liquid soap. Therefore, use a wooden spatula or a teaspoon. Pour it dropwise.

Cookie cutter

9 Melt the creative-soap in a water-bath on the stove (max. 60° - do not boil).

10 After the complete melting, you can stir the desired colour and/or fragrance oil in the liquid soap. Therefore, use a wooden spatula or a teaspoon. Pour it dropwise.

11 Pour the melted soap onto a flat surface such as a small lid or some aluminum foil. Once the soap hardened, after at least half an hour, you can cut the desired motifs out by means of the cookie cutters.

Cream rosette

12 Mix the kneading-soap with hot water and the cooking oil – 50g of the kneading-soap with 20ml of hot water and about 5ml of the cooking oil.

13 Stir this mixture with a craft stick and let it rest for 10 minutes.

14 Then knead the mixture well again. Build together a pastry bag (without a bag) and fill it with some kneading-soap.

15 Push the kneading-soap with a finger through the tip and shape at once the pushed out mixture.



Additional info and tools

The soap dries or rather carries on ripening and becomes thereby firmer (two up to three weeks). Depending on the temperature and airiness, the soap can perspire. We recommend therefore to wrap the soap after its demoulding in a cellophane foil. Clean the soap casting mould and the pots with hot water.

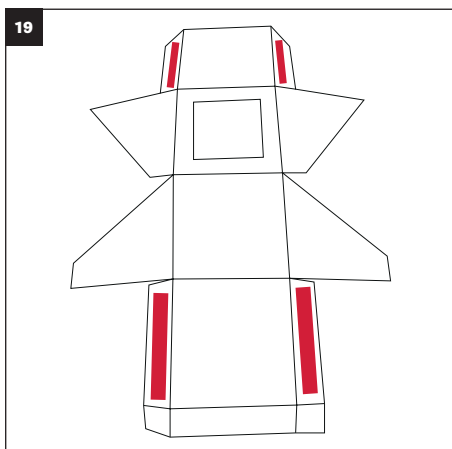
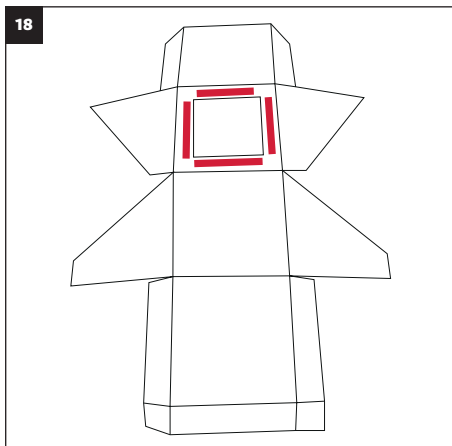
Wrapping (see stencil next page)

16 Cut the paper cutting by means of the stencil and fold all dotted lines for e.g. with the Sure Cut paper cutting machine and folding blades.

17 Then cut the solid lines out.

18 Glue the cutting of the crystal clear rigid film in the box with the double-sided adhesive tape.

19 At the end, stick together the box by means of the double-sided adhesive tape.



Rayher.

KALEIDO 1 Brasov,

KALEIDO 2 Brasov, str. Dr. Liviu Cimpeanu nr.47

Tel : 0726 244 171

www.rayherhobby.ro

sos. Cristianului nr.1-3

Tel : 0726 244 174

www.kaleido.ro

Kaleido
Office & Hobby

